



Download from
Dreamstime.com

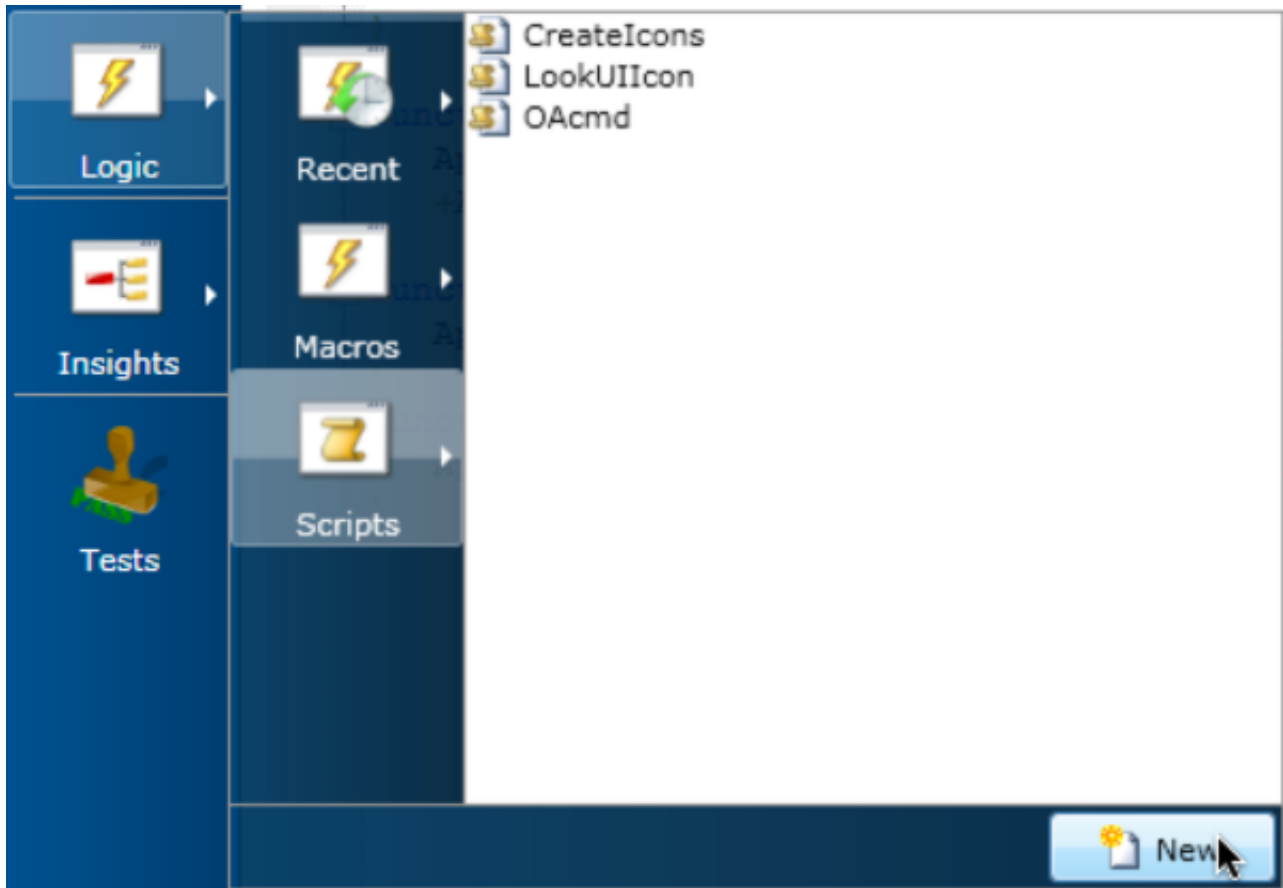
This watermarked comp image is for previewing purposes only.



ID 35103813

© Yulia Gapeenko | Dreamstime.com

[Display Installed Programs On Iseries Jobs](#)



[Display Installed Programs On Iseries Jobs](#)



Download from
Dreamstime.com

This watermarked comp image is for previewing purposes only.



ID 35103813

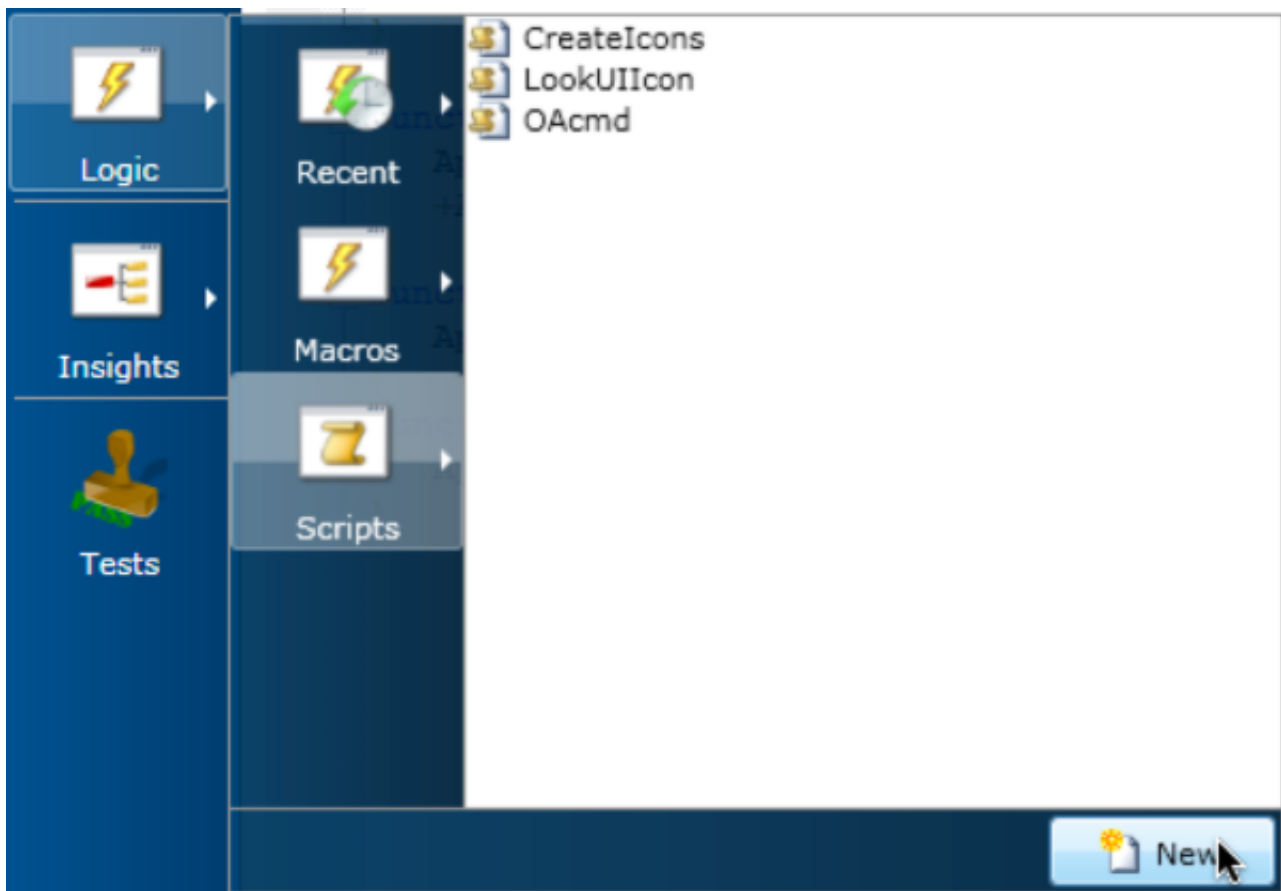
© Yulia Gapeenko | Dreamstime.com

The name of the start-up job when it runs is the same as the name of the job description that the job runs with (QSTRUPJD).. The system default name of the IPL start-up program is QSTRUP in library QSYS A default QSTRUP program is released with each new version of the operating system.

This autostart job transfers control to the program specified in system value QSTRUPPGM.. Page up to view the entries in the job log To pursue problems with the start-up job, use the CHGJOB command to change the QSTRUPJD job description to set the Log CL Program Commands parameter to *YES.. This job description resides in library QSYS and is initially set with the Log CL Program Commands parameter set to *NO.

[Tmptenc Dvd Author 4 Full Crack](#)

Iseries Jobs UkNote that the PGM parameter as shown above assumes that you want to retrieve the CL source of the QSTRUP program from the QSYS library (the version that comes with the release of the system).. If the QSTRUPJD job is active, select the option to view the job log of the job, and press the F10 key.. If the system value QSTRUPPGM has not been changed on a particular system, when a new release is installed, the new version of the QSTRUP program released with the new set of system software is used as the IPL startup program for the system.. The old version of the program resides in the QSYSVxRxMx library where VxRxMx specifies the previous version/release/modification level. [Лучшая Караоке Программа](#)



[Microsoft Serial Key](#)

[Microsoft Word Opening Slowly On Mac](#)

To review the job log for the start-up program, on an operating system command line, type the following: WRKJOB QSTRUPJD Press the Enter key, and select one of the jobs in OUTQ status and view the spooled file QPJOBLOG for the job.. Note that during the run, the installation program automatically inserts 3 working.. The following command may be used to create a new source file if needed CRTSRC PF FILE(mylib/myfile) To retrieve the CL source of the start-up program for the system, on an operating system command line type the following: RTVCLSRC PGM(QSYS/QSTRUP) SRCFILE(mylib/myfile) Press the Enter key.. This autostart is run when the controlling subsystem is initially started using an IPL or is restarted using the STRSBS command after the system has been in restricted state.. The source file must exist prior to executing the retrieve command or the command will fail. [Oxygen Xml Editor 20.0](#)

[Gran Turismo 5 Pc Download Utorrent](#)

Type '4' beside all the jobs displayed, except those of type INTERACTIVE The Bsafe/Enterprise Security system and it will no longer protect your iSeries.. If you suspect any problems with the start-up program, review the job log for the start-up program.. Iseries Jobs UkIseries Jobs BelgiumIseries Job DescriptionGeneral Information About the Start-Up Program The system IPL start-up program is run by an autostart job that runs in the controlling subsystem.. If you wish to use a particular source file and it already has a QSTRUP member of type CLP then you might want to retrieve the source into a new member and compare it with the source in the existing QSTRUP member.. This provides better logging of information needed to resolve the problem Retrieving the CL Source of a Start-Up Program Usually the file QCLSRC in library QGPL is used for this purpose; however, you may use a different source file if you wish. e828bfe731 [Chief Keef Dedication Download](#)

e828bfe731

[Игры На Ноутбук Самсунг](#)